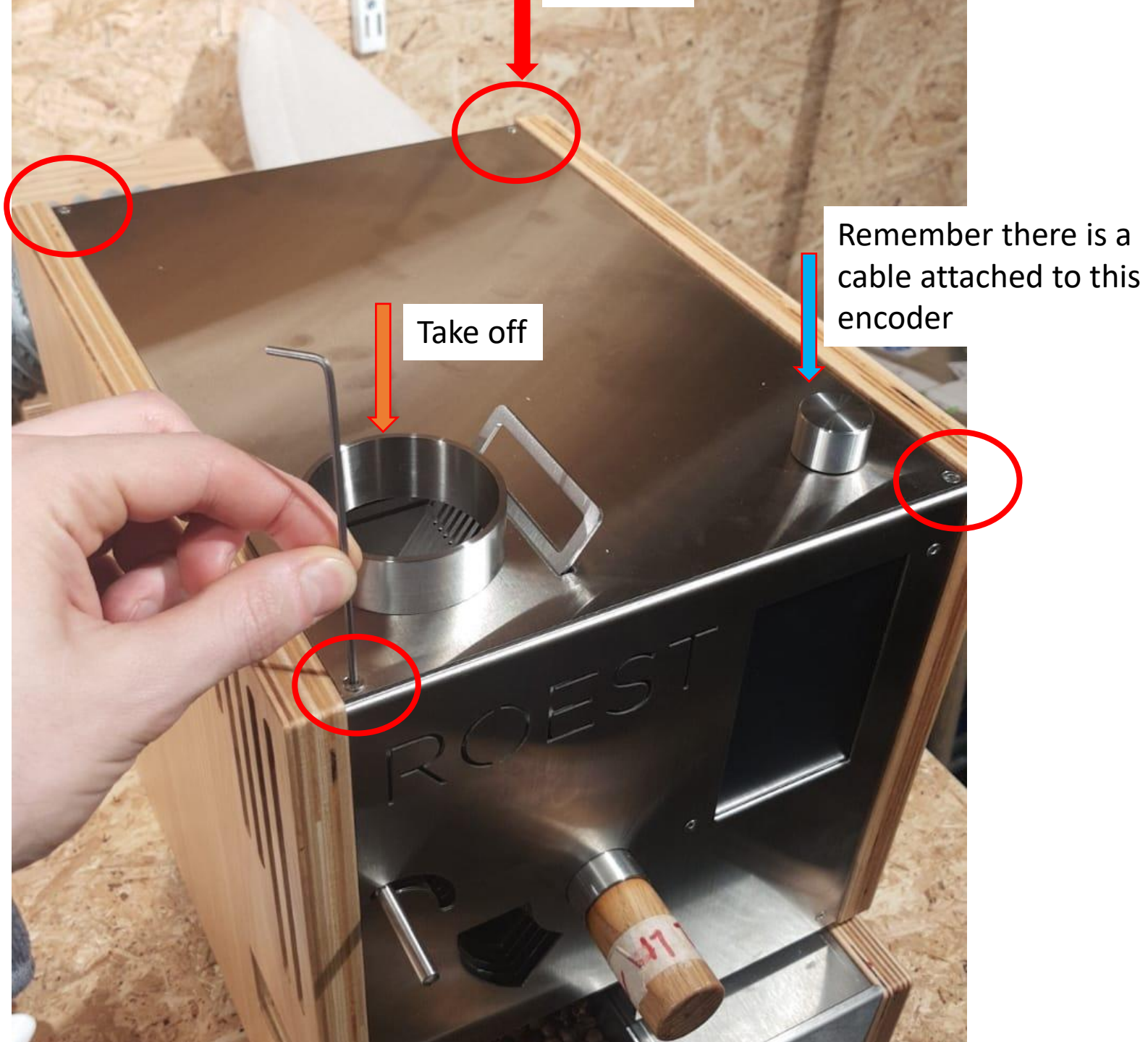


Check temp sensor connectot

- We will work on better manuals. If you have any questions contact us on support@roestcoffee.com

WARNING!
-Disconnect.





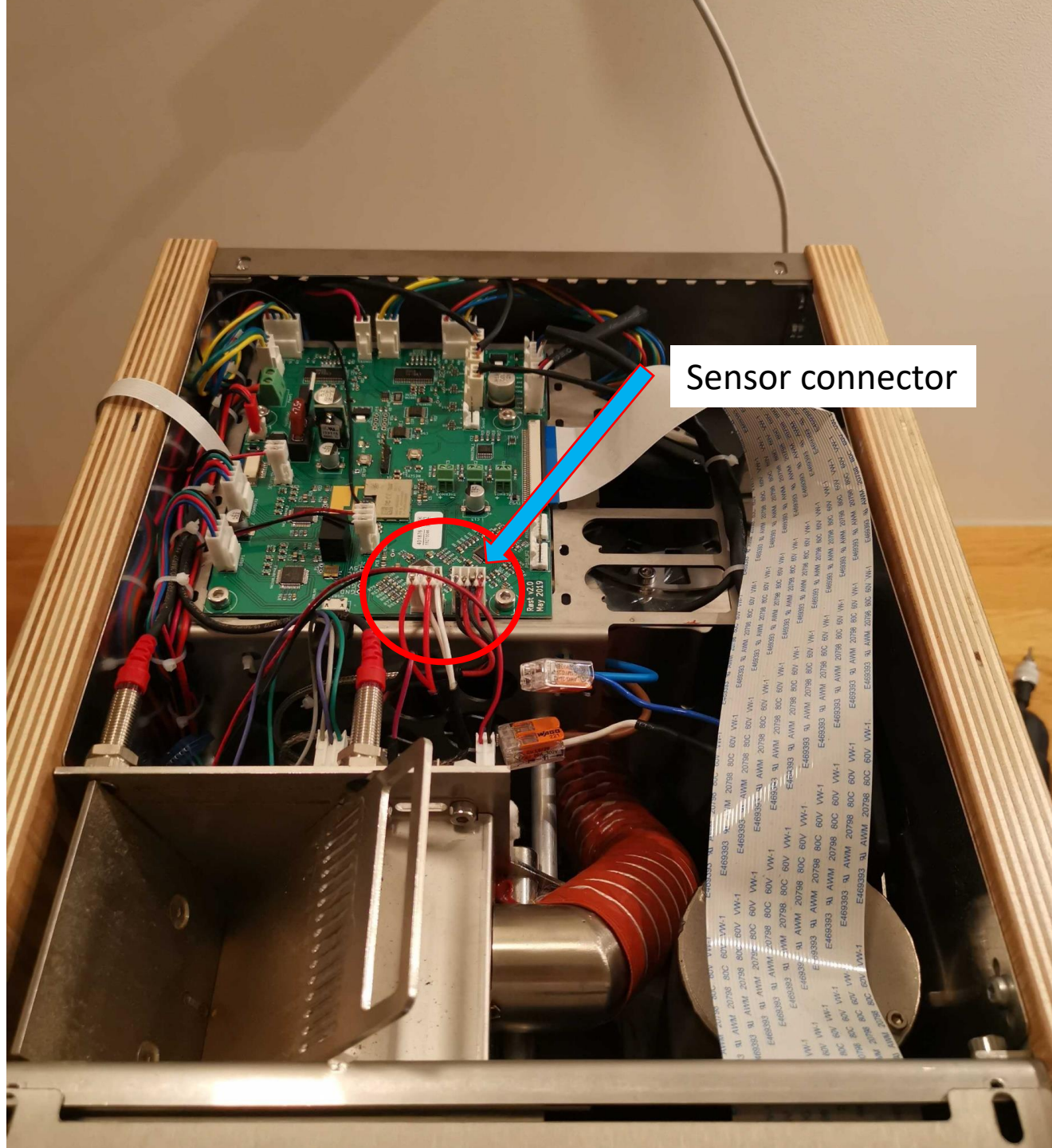
Remember there is a cable attached to this encoder

Take off

ROEST

Take of top but be aware the cable that must be disconnected





Sensor connector

If they are soldered just check the connector. If they are not soldered you can press down the cables with a screwdriver. Like below.

