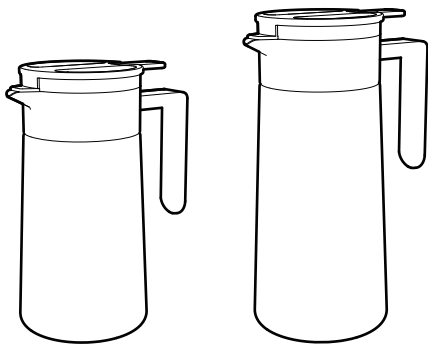


# HARIO

## Double-Walled Thermal Pot with CERAMIC COATING



### Instruction Manual

Thank you for purchasing this HARIO product.  
Please be sure to read this instruction manual thoroughly prior to use.  
After reading the manual, store it in a safe place for future reference.

### CONTACT

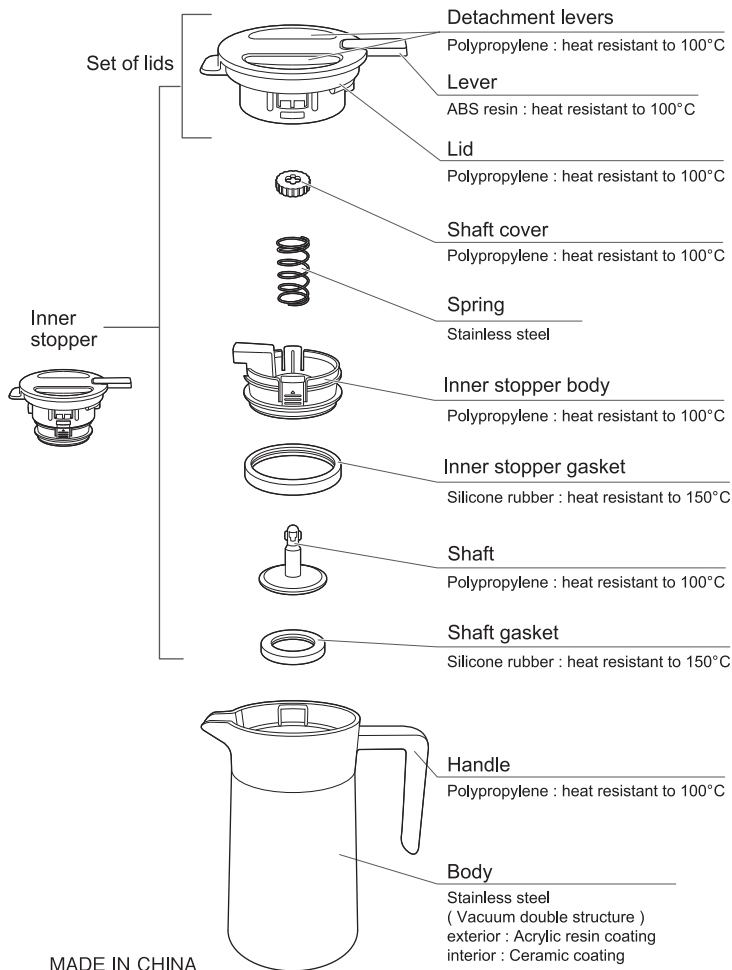
HARIO CO., LTD.

9-3 Nihonbashi Tomizawa-Cho,  
Chuo-ku, Tokyo 103-0006 Japan  
<https://global.hario.com>



HOW TO USE

# Material guide



MADE IN CHINA

## Precautions for use

- ⚠ Do not expose to open flames. Do not use with microwave ovens or induction cooking appliances.
- ⚠ Adult supervision is required if a child is using this product. Be sure to explain all of the precautions before use. Be extremely careful when using near children. Store out of reach of children.

- Wash the product before using for the first time.
- Do not use other than for keeping drinks hot / cold.
- Do not use if the heat retention function has decreased.
- Do not use if you hear the sound of water coming from inside the vacuum double structure (vacuum layer).
- Do not use near open flames.
- Avoid using or storing the product in high temperature, high humidity, direct sunlight or ultraviolet rays, or in wet locations.
- Do not apply any vibration or shocking impact to the product.
- Do not put in the freezer.
- Do not allow the hot kettle to come in contact with the mouth of the product.
- Ensure the inner stopper is shut during use. Also, ensure that each part has been correctly set.
- After filling with a hot drink, press the lever to release the pressure. Point this product away from any people while doing so, as the pressure inside may cause spraying of contents.
- When removing the inner stopper with liquid inside the product, push the lever once to release the internal pressure, then remove the inner stopper.
- Please be careful of mischief of infants and children.
- Do not tilt this product before pushing down the lever, as the pressure inside may cause spraying of contents.
- Do not place this product on an unstable surface. This may cause this product to topple and the contents to spill, causing burns or staining of nearby objects.
- When carrying the product, be sure to hold the body or the handle. Do not press the lever while carrying.
- Never attempt to repair, disassemble or modify this product. Ensure that the special parts are installed prior to use.
- Do not leave drinks in this product for a long period of time. This may cause corrosion or deformation.
- Discoloration or tainting may occur if drinks such as tea are left in this product for a long period of time.

## Precautions for use

- Break large ice cubes into smaller pieces before placing in this product. Scratching or leakage may occur if they are placed in whole.
- Do not put in the following items.
  - Dry ice and carbonated drinks  
These items may cause pressure to build up inside the product, which may prevent the inner stopper from opening, cause part of the product to break or shatter, or cause liquid to spray from the product. This may ultimately result in injury or soiling of the surrounding area.
  - Milk, dairy products, fruit juice and other perishable items  
Gas released by the decay of items left inside the product for prolonged periods may cause pressure to build up inside the product, which may prevent the inner stopper from opening, cause part of the product to break or shatter, or cause liquid to spray from the product.
  - Miso soup / soup with salt content  
The salt content can cause rust, rotting or deteriorating.
  - Tea leaves / flesh pulp  
They can clog up any openings and cause burns from leakage or dirty the surroundings.
- Take care to avoid tipping when filling drinks or using the dripper.
- Depending on the type of dripper, it may not fit properly. If that is the case, do not force it.
- When installing the inner stopper, take care to avoid tilting or shaking the body. Drinks may spill and cause burns.
- Do not remove the sticker in the center of the bottom of the body.
- In the unlikely event the product becomes damaged, please handle any broken pieces with care.
- Follow local rules on garbage disposal when disposing of this product.

## 製品仕様

	Heat retention effect	Cold retention effect
Actual capacity 600mL	63°C or higher (10 hours)	6°C or lower (6 hours)
Actual capacity 800mL	69°C or higher (10 hours)	6°C or lower (6 hours)

## Product care

- Wash and dry thoroughly after use.
- Use a neutral dish detergent diluted with lukewarm water for cleaning.
- Do not boil, soak, or use a dishwasher or dish dryer.
- Do not leave the body in water.
- Do not use chlorine bleach, thinners, cleansers, metal scrubbing brushes or chemical cloths on this product.
- When not using for a long period of time, make sure to clean completely, dry and store in an area with less moisture.
- Body (exterior)

Wash thoroughly, drain well, and immediately wipe off moisture with a dry cloth to dry thoroughly.
- Body (interior)

Wash thoroughly using a sponge brush with a handle and dry thoroughly. If the body is extremely dirty, use a cleanser for stainless steel bottles.
- If red bumps resembling rust occur

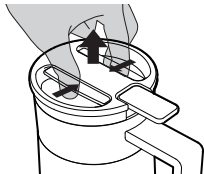
This residue is formed by minerals such as iron in the water. Fill this product with a warm 10% vinegar solution and leave for around 30 minutes, then thoroughly wash the inside with a soft sponge brush, etc. Rinse thoroughly with clean water until no vinegar remains.
- If a rough residue occurs

This residue is formed by minerals such as calcium in the water. Fill this product with a warm 10% citric acid solution and leave for around 3 hours with the lid off, then thoroughly wash the inside with a soft sponge, etc. Rinse thoroughly with clean water until no citric acid remains.
- Inner stopper

Remove the inner stopper gasket and wash with a soft sponge soaked in hot water with dish detergent. Then, rinse well with clean water so that no detergent remains. Always reattach the inner stopper gasket after washing. If you are concerned about dirt inside the inner stopper, you can disassemble it and clean each part using the same method. Refer to “Inner stopper assembly” “Inner stopper disassembly” for information on assembling and disassembling the inner stopper.

# How to use

## 1 Remove the inner stopper



Pinch the detachment levers with your fingers and slide them toward the center, lifting as you do so.

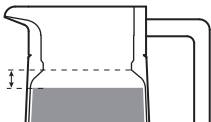
## 2 Mount the dripper (when brewing pour over coffee)



Remove the inner stopper and mount the dripper. Always ensure that the dripper is stable before use.

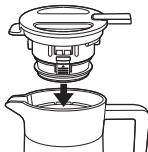
## 3 Brew pour over coffee (or pour a drink into the product)

Approximately  
1 cm from the  
bottom of the  
inner stopper.



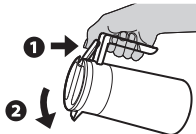
Do not fill beyond the point indicated in the diagram. If this product is overfilled, the lid may not close and the contents may overflow, or closing the lid may result in pressure that causes the contents to spray from the product. This may ultimately result in burns. There is also a risk of damage to the product.

## 4 Insert the inner stopper



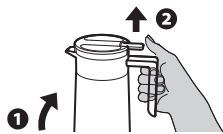
Push the inner stopper straight down. Push firmly until you hear a click. If the inner stopper is not securely set, the drink may leak.

## 5 Begin pouring



To pour, press the lever, then tilt the body. If the lever is pressed after tilting, the pressure may cause the contents to spray from the product.

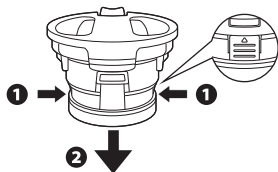
## 6 Finish pouring



After pouring, always return the body to a horizontal position before releasing the lever. Releasing the lever with the body tilted may cause liquid to be retained in the inner stopper, which may result in burns.

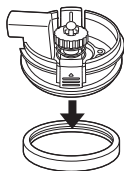
# Inner stopper disassembly

## 1 Remove the set of lids.



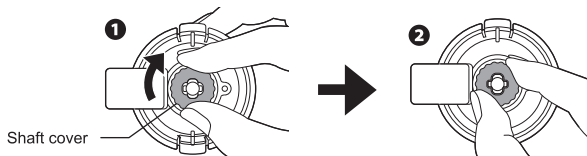
Press the buttons on the side of the inner stopper at the same time and remove the lid set.

## 2 Remove the inner stopper gasket.



Remove the inner stopper gasket in the direction of the arrow.

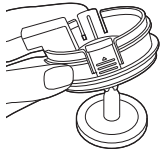
## 3 Remove the shaft cover.



While pushing the shaft cover in, turn it 90 degrees in the direction of the arrow to remove the shaft cover and spring.

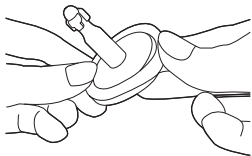
※Grip the shaft cover firmly as the spring may pop out.

## 4 Remove the inner stopper body.



Remove the inner stopper body from the shaft.

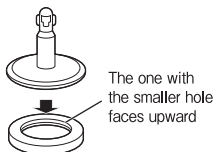
## 5 Remove the shaft gasket.



Remove the shaft gasket from the shaft.

# Inner stopper assembly

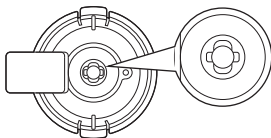
## 1 Attach the shaft gasket.



Put the one with the smaller gasket hole facing up and attach it to the shaft. Be careful not to let the gasket float.

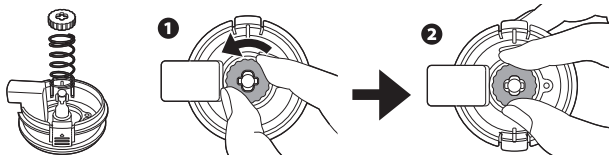
※If the gasket is floating, it may cause leakage.

## 2 Attach the inner stopper body.



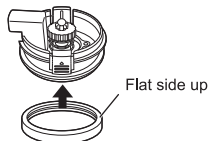
Place the shaft on a flat surface and cover it with the inner stopper body. Orient the shaft as shown in the illustration.

## 3 Attach the spring and shaft cover.



Pass the spring and shaft cover through the shaft in this order. Set the direction of the shaft cover to match the shape of the shaft as shown in the illustration. Hold the inner stopper with your hand, push in the shaft cover, and turn it 90 degrees in the direction of the arrow to attach it to the shaft.

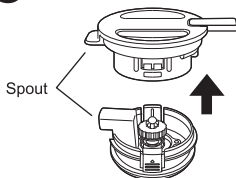
## 4 Attach the inner stopper gasket.



Attach it to the inner stopper with the flat side facing up. Be careful not to let the gasket float.

※If the gasket is floating, it may cause leakage.

## 5 Attach the set of lids.



Align the direction of the spout and attach securely until it clicks.